

# BRITISH HOME NATIONS ENGLAND INTERNATIONAL OPEN 2023

04 and 05 November 2023

At Leeds Beckett University,  
West Yorkshire, LS6 3QQ, United Kingdom



**LEEDS BECKETT  
UNIVERSITY**



# Tournament Summary

- ▶ **Competition Venue:** Leeds Beckett University, Headingley Campus, Leeds, West Yorkshire, LS6 3QQ, United Kingdom
- ▶ **Date:** 04 and 05 November 2023
- ▶ **Entry Deadline:** 15 October 2023
- ▶ **Registration:** [www.ma-regonline.com](http://www.ma-regonline.com)
- ▶ **Capacity:** Maximum capacity of 600 competitors (300 per day)
- ▶ **Competitor Fee:** £50 for all categories
- ▶ **Spectators:** £10 per day; free for kids under 5 years
- ▶ **Age Categories:**
  - ▶ Pee Wee A and B categories with 7 weights
  - ▶ Child A and B categories with 9 weights
  - ▶ Cadet A and B categories with 10 weights
  - ▶ Junior A and B categories with 10 weights
  - ▶ Senior A and B categories with 8 weights
  - ▶ Veteran A and B categories with 4 weights
- ▶ **Referees/officials:** Contact [info@horizontaekwondo.co.uk](mailto:info@horizontaekwondo.co.uk) to register



# Entry Payments

- ▶ All entries £50 per competitor
- ▶ Entry fees due by 15 October 2023
- ▶ Payments to be made to:
  - ▶ Simpson Kidd Taekwondo Ltd
  - ▶ 85248858
  - ▶ 09-01-27
- ▶ Overseas teams payments made to:
  - ▶ BIC: ABBYGB2LXXX
  - ▶ IBAN: GB82ABBY09012785248858



# Organisation Team

Role	Appointed
Event Organisation Group	Horizon Taekwondo Academy
Event Manager	Rick Simpson
PSS	MA-REG
IVR	MA-REG
OVR	MA-REG
Chief Referee	Chris Codling
Technical Delegate	Paul Timms





# Event Enhancements

Our event will use the following enhancements, making it stand out from all other UK events and raise standards:

- ▶ A and B class for ALL age divisions
- ▶ Multiple weigh in stations and sittings
- ▶ WT Approved IVR System
- ▶ Invited Overseas International Referees in attendance
- ▶ Appointment of a BT Technical Delegate
- ▶ British Taekwondo Tents/Stalls
- ▶ 500 seater tiered bleacher seating as well as floor seating
- ▶ 600 car parking spaces with overflow capacity



# Event Categories



Born in 2015 or after			
Pee Wee			
Male		Female	
A Class	B Class	A Class	B Class
-18	-18	-18	-18
-20	-20	-20	-20
-22	-22	-22	-22
-24	-24	-24	-24
-26	-26	-26	-26
-30	-30	-30	-30
+30	+30	+30	+30

Born in 2012, 2013, 2014			
Child			
Male		Female	
A Class	B Class	A Class	B Class
-24	-24	-24	-24
-26	-26	-26	-26
-29	-29	-29	-29
-32	-32	-32	-32
-36	-36	-36	-36
-40	-40	-40	-40
-44	-44	-44	-44
-48	-48	-48	-48
+48	+48	+48	+48

Born in 2009, 2010, 2011			
Cadet			
Male		Female	
A Class	B Class	A Class	B Class
-33	-33	-29	-29
-37	-37	-33	-33
-41	-41	-37	-37
-45	-45	-41	-41
-49	-49	-44	-44
-53	-53	-47	-47
-57	-57	-51	-51
-61	-61	-55	-55
-65	-65	-59	-59
+65	+65	+59	+59

Born in 2006, 2007, 2008			
Junior			
Male		Female	
A Class	B Class	A Class	B Class
-45	-45	-42	-42
-48	-48	-44	-44
-51	-51	-46	-46
-55	-55	-49	-49
-59	-59	-52	-52
-63	-63	-55	-55
-68	-68	-59	-59
-73	-73	-63	-63
-78	-78	-68	-68
+78	+78	+68	+68

Born in 2006 or before				Born in 1988 or before			
Senior				Veteran			
Male		Female		Male		Female	
A Class	B Class	A Class	B Class	A Class	B Class	A Class	B Class
-54	-54	-46	-46	-58	-58	-49	-49
-58	-58	-49	-49	-68	-68	-57	-57
-63	-63	-53	-53	-80	-80	-67	-67
-68	-68	-57	-57	+80	+80	+67	+67
-74	-74	-62	-62				
-80	-80	-67	-67				
-87	-87	-73	-73				
+87	+87	+73	+73				

# Awards

## Athlete Awards

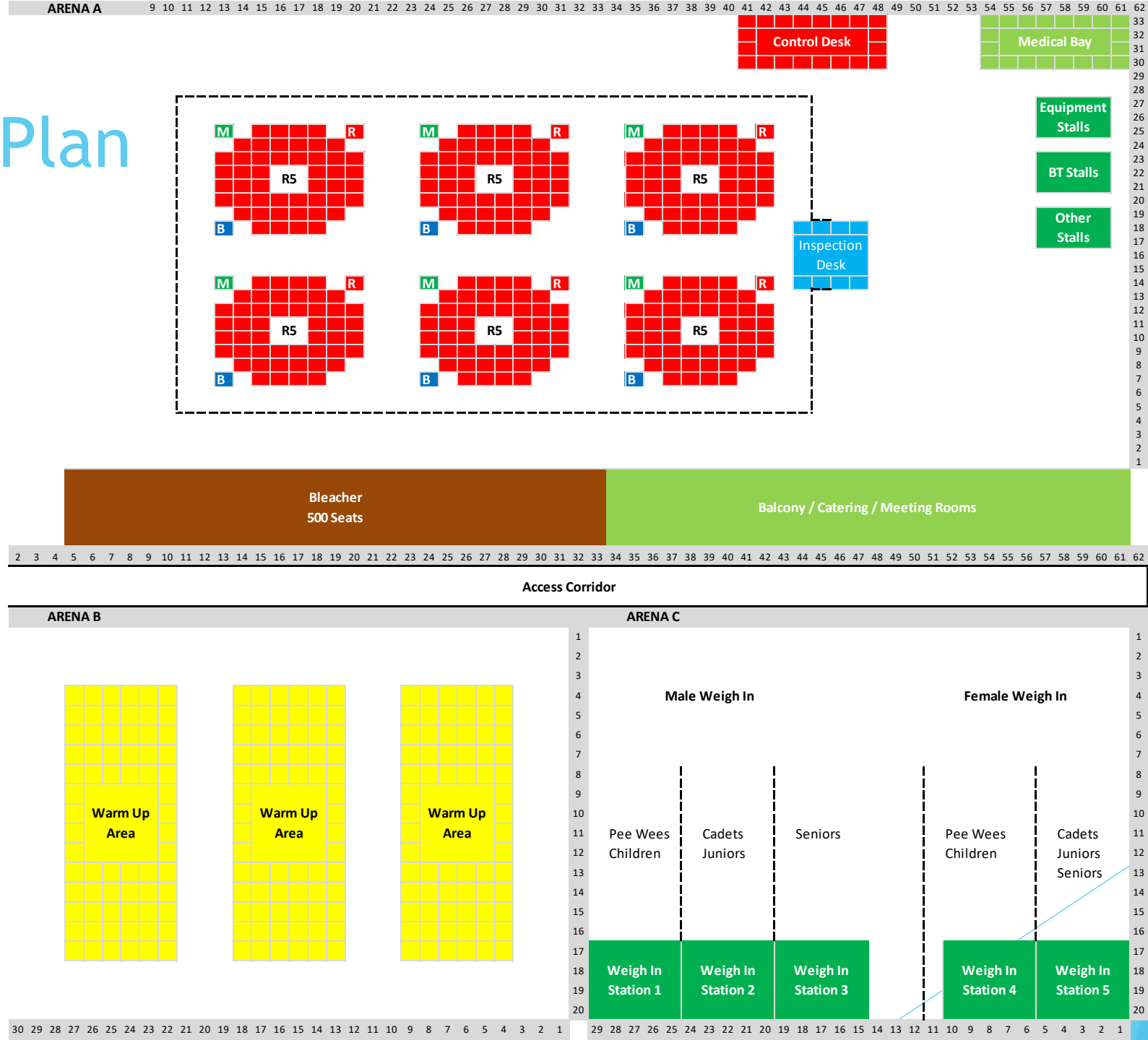
- ▶ All athletes will receive a participation certificate
- ▶ The top 4 athletes will receive Gold (1), Silver (1) and Bronze (2) medals

## Team Awards

- ▶ 1<sup>st</sup>, 2<sup>nd</sup> and 3<sup>rd</sup> Place Team Trophy Awards for Day 1 teams
- ▶ 1<sup>st</sup>, 2<sup>nd</sup> and 3<sup>rd</sup> Place Team Trophy Awards for Day 2 teams
- ▶ 1<sup>st</sup>, 2<sup>nd</sup> and 3<sup>rd</sup> Place Team Trophy Awards for Days 1 and 2 teams combined
- ▶ 1<sup>st</sup> Place “Small Teams” Trophy Award for Day 1 teams with 7 or fewer competitors
- ▶ 1<sup>st</sup> Place “Small Teams” Trophy Award for Day 2 teams with 7 or fewer competitors

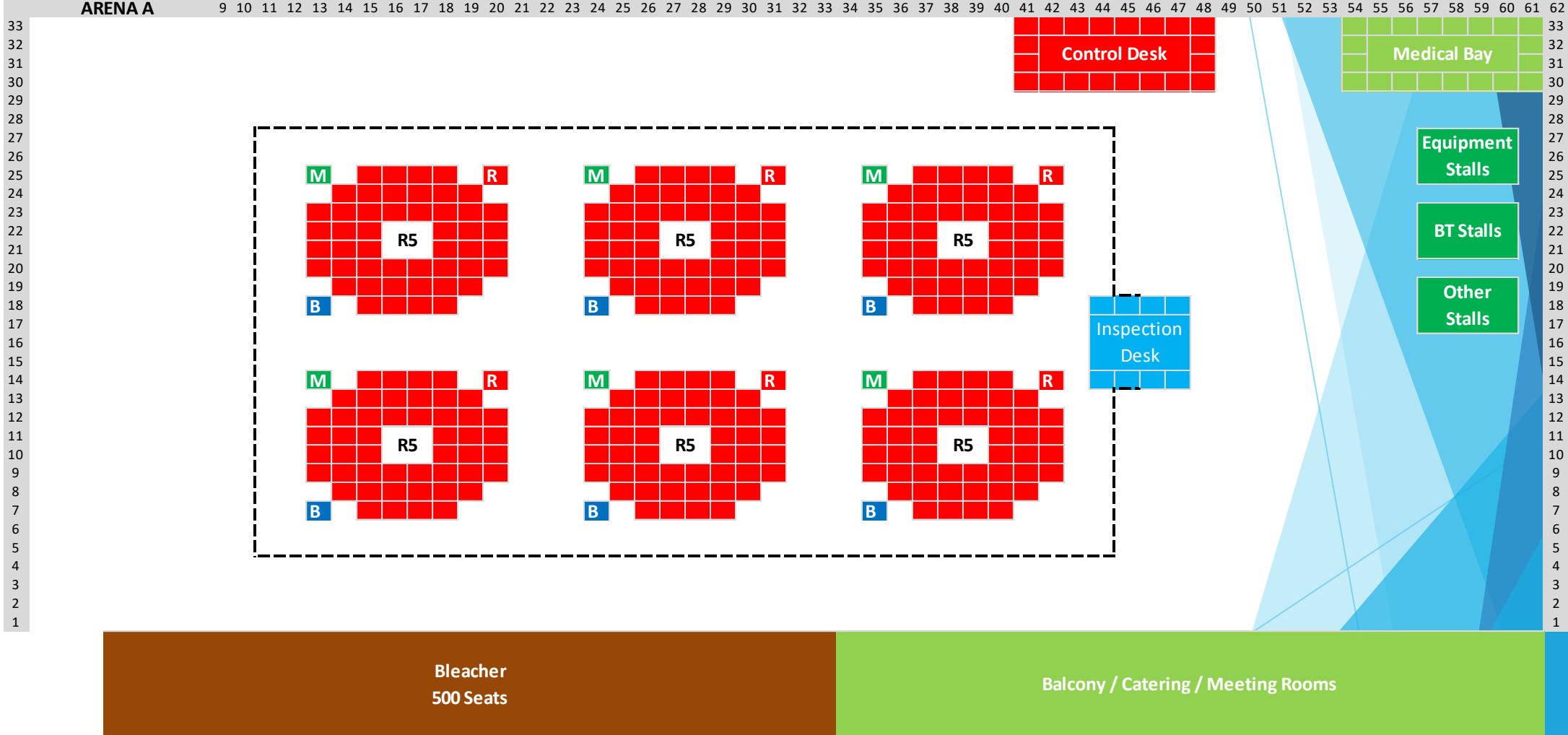


# Site Plan

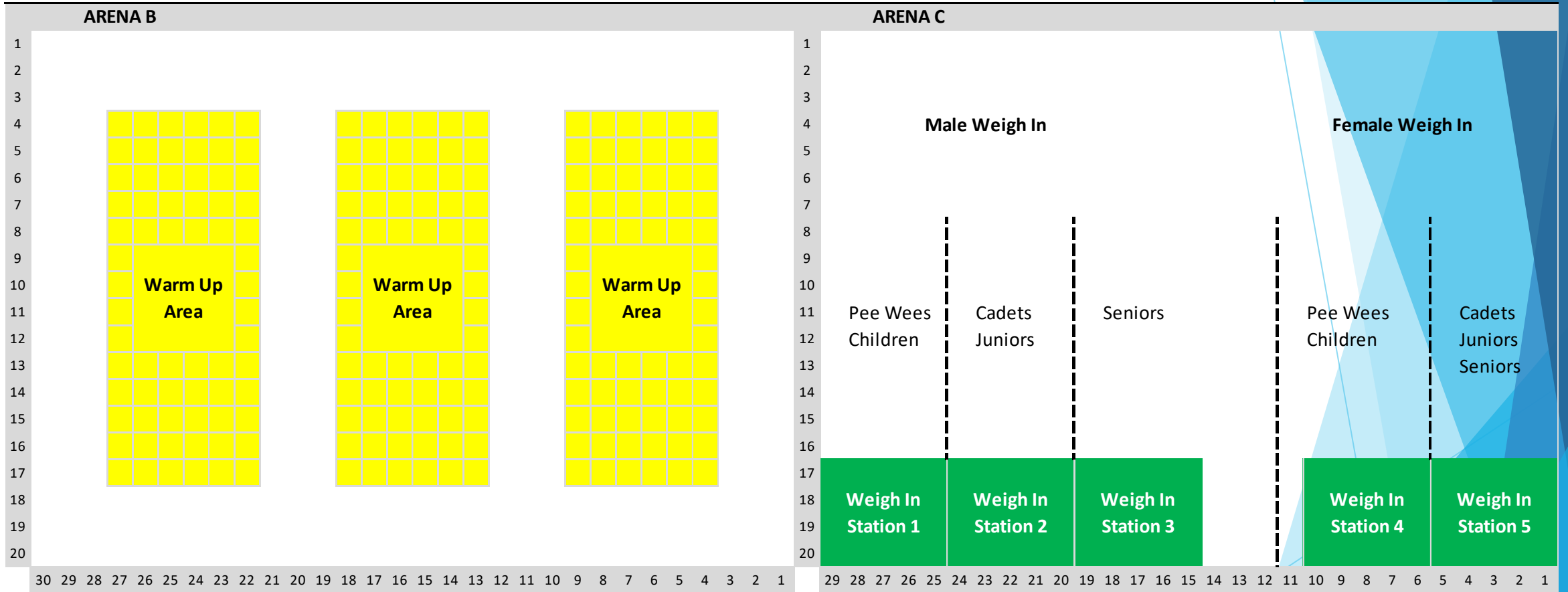




# Competition Arena Floor Plan



# Other Facilities Floor Plans



# Event Partners

Sanctioned By



British Taekwondo

Hosted By



Horizon Taekwondo Academy

Competition Venue



Leeds Beckett University

Event Management



[www.ma-regonline.com](http://www.ma-regonline.com)

Medical Services



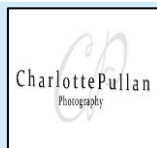
First Aid Medical Services

Equipment Stalls



Goldforce UK

Photography



CP Photography



# Event Schedule

## Competition Schedule:

Day	Time	Activity
Saturday	9:00am-5:00pm	All ADVANCED divisions compete
Sunday	9:00am-5:00pm	All NOVICE divisions compete

## Information Publication:

Day	Time	Activity
Saturday	9:00am	Saturday draw sheets pt.1
Saturday	10:30pm	Saturday draw sheets pt.2
Sunday	9:00am	Sunday draw sheets pt.1
Sunday	10:30am	Sunday draw sheets pt.2



# Weigh-In Schedule

## Weigh-in Schedule:

Day	Time	Activity
Friday 03 November	6:00pm-8:00pm	Weigh-in for ALL categories
Saturday 04 November	8:00am-8:45am	Weigh-in for PEE WEE and CHILD SATURDAY competitors ONLY
Saturday 04 November	9:00am-9:45am	Weigh-in for CADET, JUNIOR, SENIOR and VETERAN SATURDAY competitors ONLY
Saturday 04 November	4:00pm-5:00pm	Weigh-in for ALL SUNDAY competitors
Sunday 05 November	8:00am-8:45am	Weigh-in for PEE WEE and CHILD SUNDAY competitors ONLY
Sunday 05 November	9:00am-9:45am	Weigh-in for CADET, JUNIOR, SENIOR and VETERAN SUNDAY competitors ONLY

All weigh-in changes incur an administration fee of £20

# Scoring Systems for this Event

Age Group	A Class	B Class
Pee Wee	<b>PSS</b>	<b>PSS</b>
Child	<b>PSS</b>	<b>PSS</b>
Cadet	<b>PSS</b>	<b>PSS</b>
Junior	<b>PSS</b>	<b>PSS</b>
Senior	<b>PSS</b>	<b>PSS</b>
Veteran	<b>PSS</b>	<b>PSS</b>



- ▶ We are proud to announce that **Daedo TrueScore** is our chosen scoring system provider for this event.
- ▶ PSS will be used for all Pee Wee, Child, Cadet, Junior and Senior Categories.
  - ▶ Competitors will need the same protective gear as Manual scoring, with the exception of the body protector and head guard which will be provided by the tournament organisation.
  - ▶ Competitors will also require PSS sensor socks.